



**LAHAM
TCHAD**
لحم تشاد



WE STAY AHEAD OF THE CURVE BY

**BUILDING A
SUSTAINABLE**

INDUSTRIAL ENVIRONMENT IN CHAD



ABOUT CHAD

The Republic of Chad is located in the heart of Africa and is the continent's fifth-largest country. It shares borders with Libya to the north, Sudan to the east, the Central African Republic to the south, Cameroon to the southwest, Nigeria to the southwest (at Lake Chad), and Niger to the west.

Chad is endowed with diverse natural resources including petroleum, uranium, gold, limestone, cotton, neutron, etc. and cultivable land.

The international airport in the capital of CHAD, Ndjamena can accommodate large jets, and there are more than 40 secondary airports throughout the country.

CHAD'S NATURAL ABUNDANCE

Abundant
resources at highly
competitive rates

Natron: Natron (a complex sodium carbonate) is unloaded along the eastern shore of Lake Chad near Baga Sola, Chad. Natron is used as salt and in preparing soap and medicines.

Oil: After further study, oil was discovered north of Lake Chad. Production of oil began in 2003, and it soon rose to prominence as the nation's main export and resource. Chad produces 800,000 tonnes of peanuts per year and paradoxically, imports half of its consumption of edible oils.

Mining: A 2010 geologic survey conducted by the Chadi government indicated that the country is rich in silver, diamonds, quartz, granite, tin, tungsten, limestone, sand, gravel, kaolin, and salt resources. Gold reserves can be found across Chad, including those mined in the countries southwest. There are also bauxite, titanium, and uranium mineral deposits.

Republic of Chad: advancing economic interests through multiple African agreements:

CEMAC :

(Economic and Monetary Community of Central Africa): Free trade among 6 member states with a community of over 52 million people.

WTO :

The World Trade Organization (WTO) is the only global international organization dealing with trade rules between nations. Chad has been a member of WTO since the 19th of October 1996 and a member of GATT (the General Agreement on Tariffs and Trade) since the 12th of July 1963.

ECCAS :

(Economic Community of Central African States): Promotes economic integration and cooperation among its member countries, which are located in Central Africa.

African Union :

A continental union comprising 55 member states from the African continent, working together to promote peace, security, and economic integration.





MESSAGE FROM THE PRESIDENT

On May 3rd, in his inauguration speech, the president of the Republic of Chad emphasized that his policy is centered on the country's industrialization.

His program aims at a fundamental change in the way of production and sales of livestock products, leading to a revolution in the mentality and lifestyle of breeders.

The development of slaughterhouses as part of the special economic zones initiative, which will be labeled and sold around the world, will modernize livestock exploitation, resulting in the growth of income and job opportunities.

The immense infrastructure construction project will be continued and strengthened. He affirmed that Chad needs an even denser road network.

During his five-year term, it is planned to double the mileage of paved roads to reach seven thousand (7,000) km. This loop will allow connection to the road networks of neighboring countries.



Monsieur MAHAMAT IDRIS DEBY ITNO

Président de la République, Chef de l'État.

السيد محمد إدريس ديبي إتنو
رئيس الجمهورية، رأس الدولة

PRESIDENT'S PEACE MESSAGES

"I have already extended an invitation to all of my fellow citizens, both those living in the country and those living abroad, to come together in a wave of unity and solidarity in order to project our nation into the modern era."

ABOUT



Arise Integrated Industrial Platforms (IIP) owned by AFC (50.5%) and ATIF (49.5%) specializes in the development of industrial zones and their dedicated ecosystems. It designs, finances, builds, and manages large projects throughout Africa.



Following the MOU signed in July 2021, a joint venture was created on March 16, 2022, under the name Laham Tchad SAS between Arise IIP (65%) and the Republic of Chad (35%). The primary goal is to provide local and international investors with access to infrastructure and a business-friendly environment. Laham Tchad's share capital is 5 billion CFA francs (7.62 million euros).

THE MAIN ROLE OF LAHAM TCHAD

- ✓ **Structuring**, monitoring, and conducting the construction of special industrial zones, to the highest standards, including industrial slaughterhouses, quarantine zones, feedlots logistics warehouses, and other facilities.
- ✓ **Find**, attract, and support efficient and creditworthy private actors for the operation of SEZ-related activities, as well as seek and arrange financing for the construction of SEZs.
- ✓ **Manage** the generation and proper distribution of the value created by the meat export activity, to ensure an ecosystem of efficient players contributing to the optimization of the profitability of the export activity. Use the group's distribution network to develop complex commercial routes accessible to local players (butchers, wholesalers, etc.).
- ✓ **Use** the group's distribution network to develop complex commercial routes accessible to local players (butchers, wholesalers, etc.).

KEY INFORMATION



GDP per capita

716.80 USD
(2022)



GDP

\$12,704,149,842
(USD)



107 Million

heads of livestock



Affiliations & Memberships in International Organizations

AGOA, WBG, AfDB,
WTO, AFD



Capital

N'Djamena



Population

(2024 est.)

19,094,000



Stable Currency

Parity with Euro
(1 EURO = 656.42 FCFA)



Land Area

1,284,000 km²
(496,000 sq mi)



Official Languages

Arabic, French

Chad is strategically located at the crossroads of main consumer markets which are mainly Cameroon, Nigeria, Niger, Libya, Egypt, Central African Republic, and Sudan, where demand for red meat is increasing in line with the population.

INVESTMENT SECTORS

- ✓ Livestock (Meat Processing)
- ✓ Cotton Textile & Apparels
- ✓ Agro-processing
- ✓ Solar Energy
- ✓ Pharmaceutical Industries
- ✓ FMCG Manufacturing
- ✓ Other Support Industries (Warehousing, Cold Storage, Packaging, Etc...

INVEST IN CHAD

- ✓ **Bordering Major Markets:** Neighbors Sudan and Nigeria, with a combined population exceeding 400 million (World Bank), unlocking access to a vast regional market.
- ✓ **Facilitates regional trade** through its modern port facilities.
- ✓ **Over 52 mn consumers** in the CEMAC region.
- ✓ **Significant Economic Contributor:** Estimated 35 million head of cattle (World Bank) highlight the sector’s contribution to the economy. untapped natural resources, and countless business opportunities.
- ✓ **Laham Tchad is committed** to ensuring that its local and foreign investors participate in thriving and diverse value chains while creating long-lasting and sustainable processing in Chad.
- ✓ **An abundant and skilled labor force.**
- ✓ **A stable political, democratic environment** and an economy with strong potential for growth.



KEY FACTS & FIGURES

MISSION: Laham Tchad’s main objective is to develop and manage the Industrial zones with accelerated growth in a sustainable way.



TARGET

- | | | |
|---|---|---|
| MEAT PROCESSING <ul style="list-style-type: none">✓ 85mn heads✓ 5mn export live | AGRO PROCESSING <ul style="list-style-type: none">✓ 164K tons Cotton✓ 850k tons Peanut✓ 300k tons Sesame✓ 42k tons Arabic Gum | SOLAR ENERGY <ul style="list-style-type: none">✓ 2,850 to 3,750 hours of sunshine per year |
| PHARMACEUTICAL <ul style="list-style-type: none">✓ 9% growing over the last 5 years | | |

UPCOMING PROJECT : DIFFERENT INDUSTRIAL ZONES

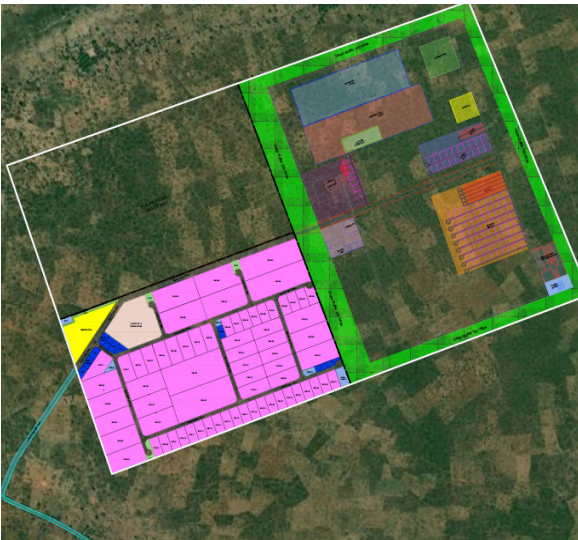


ZILOG: La zone industrielle du Logone is located in 2nd largest city of Chad, Moundou. The city is also known as the economic capital of the country. ZILOG is a PPP between Arise IIP & the Republic of Chad. This is the 1st integrated industrial platform of the country which will provide the investor with a sustainable solution for the local transformation, catering to local and regional demand and boosting export. The aim of developing ZILOG is to highlight Chad's industrialization potential and transform the country into a regional manufacturing powerhouse of abundant resources.

Zone Area: ZILOG (Moundou): 1,000 Ha
Phase 1 : 125Ha Agri-dvp, feed mill, feedlot
Phase 2 : 250Ha Solar Park
Phase 3 : 250 Ha

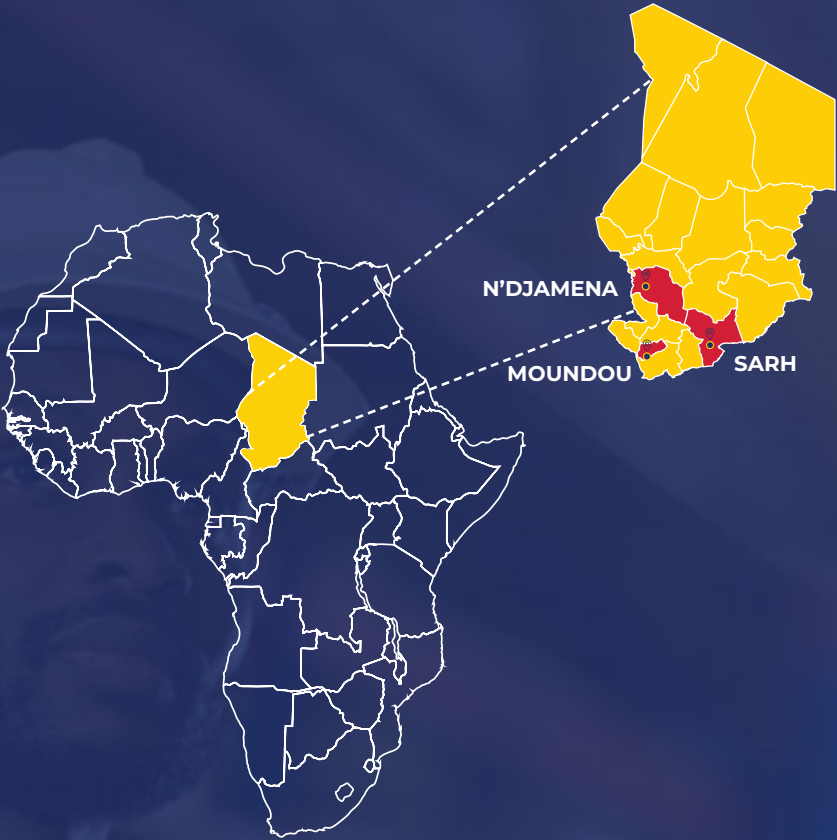
ZISARH: La Zone Industrielle de Sarh (ZISARH), is a Public Private Partnership (PPP) between ARISE IIP and the Republic of Chad, spread over 485 ha. The objective of setting up ZISARH is to promote the growth of the country's industrial and agriculture sectors.

ZONE AREA: ZISARH (Sarh) 500 Ha
Phase 1 : 31Ha Oil mill, Pharmaceutical dvp
Phase 2 : 40Ha Solar Park
Phase 3 : 40Ha Textile



ZINDJAM: ZINDJAM industrial zone, Located in the capital city of Chad, Ndjamea, ZINDJAM covers 311 ha of livestock and 280 ha of parks, quarantine areas, and purchasing areas. 31 acres will be included in the zone for a gas power plant.

ZONE AREA: ZINDJAM (N'djamena): 311 Ha
Phase 1 : 31Ha, Phase 2: 140Ha, Phase 3: 140Ha



CONNECTIVITY AND INTEGRATED LOGISTICS



- ✓ Road connectivity to the main international airport in Ndjamea
- ✓ By Road from Douala to Moundou (1459km) and Douala to Sarh (1759Km)
- ✓ Road condition from Douala to Moundou (1459km) and Sarh (1759Km)



- ✓ Direct railway access from the quay at Douala port.
- ✓ Good rail performance from Douala to N'Gaoundere (884km).



- ✓ Direct connectivity to Douala port from ZISARH 533KM from ZILOG
- ✓ Availability of dedicated storage at Douala port

- ✓ Deep sea port in Kribi to accommodate large LCC vessels.
- ✓ Advantage of Customs Direct release process at destination in N'Djamena, Moundou, and Sarh (Air and sea freight)
- ✓ We can fly from the Econo zone from Sarh to Ndjam in 1,5 hours and from Moundou to Ndjam in 1 hour.
- ✓ Only 3.6% of import taxes on goods' dutiable value (Cost+Freight+Insurance)
- ✓ Only 2 % of export taxes on goods Ex-work value

INFRASTRUCTURE SUPPORT



Industrial Zone
Premium industrial land, starting from 1 hectare and above



Commercial Zone
Plots for Business Centers, Hotels, restaurants etc



Residential Zone
Plots for apartment complexes, villas and worker dormitories



Loading and Unloading Facility
Dedicated space to load and unload your product



Dedicated Power Supply
Guaranteed electricity, water, gas, etc as required by the investors



Hassle-Free Land Provision
ICD with 100,000 TEUs handling capacity



Green Spaces

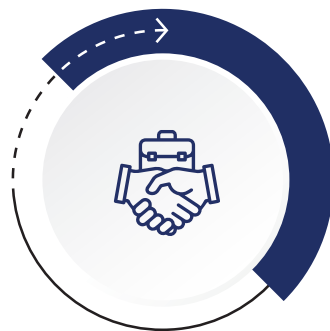


Natural Gas supply

OUR OBJECTIVES



Strengthening the Industrial Sector



Improved Business Environment



Enhancing Employment Opportunities



Sustainability



Growing Exports

FEATURES AND ADVANTAGES OF SEZ

- ✓ Assured raw material supply.
- ✓ Single window clearance for express-line processing of all business formalities
- ✓ Cleared, flat, and sound land readily available for construction.
- ✓ Uninterrupted and affordable doorstep connection of key utilities – electricity, water, and internet
- ✓ Internal road network
- ✓ Fire station, police station, medical center, etc.
- ✓ 24/7 monitoring cameras
- ✓ Wastewater and sewage treatment plants

SINGLE WINDOW CLEARANCE

A dedicated one-stop-shop bringing together all the services and agencies concerned to take care of the following formalities:

- ✓ Company registration
- ✓ Tax
- ✓ Immigration – visas, work permits/residence card
- ✓ Exoneration on various duties and taxes
- ✓ Customs
- ✓ Environmental permits
- ✓ Construction permits Etc.

ADVANTAGES OF ZISARH, ZILOG AND NDJAMIZ

Unique tax system

Tax exemption (tax rate 0% the first 10 years and 10% after 10 years)

- ✓ Registration and stamp duties
- ✓ Company tax

Custom duties

- ✓ 100% exemption from imports of equipment, machinery, and raw materials

Customs exemption (tax rate 3.40% the first 10 years)

- ✓ Customs regulations involving goods, equipment, semi-finished products, inputs, and reproduction goods, excluding community taxes.

Repatriation of capital and profits

- ✓ 100% freedom to repatriate income.

OUR SUSTAINABILITY APPROACH CONSISTS OF FOUR PILLARS, WHICH ARE AS FOLLOWS

Carbon Neutrality



Our goal is to achieve carbon neutrality by gradually eliminating intensive carbon energy sources through targeted initiatives.

Circular Economy



We strive to reduce wastage of resources by carefully integrating circular economy principles into our business strategy and operations.

Diversity & Inclusion



We aim to increase diversity across all levels of our organization through dedicated programs.

Responsible Supply Chain Management



We identify supply chain risks and take proactive measures to implement responsible procurement practices and boost stakeholder engagement.





BIENVENUE A ZIS/



📍 Immeuble Tibesti 1 | 2ème Etage, face à Ecobank |
avenue du Général de Gaule BP 1616 Ndjamenat Tchad

☎ +235 6000 0150

✉ contact@lahamtchad.com



**LAHAM
TCHAD**
لحم تشاد